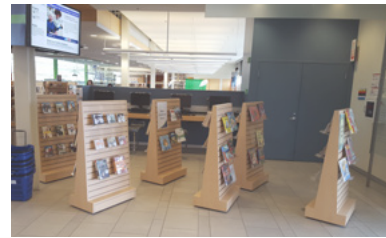
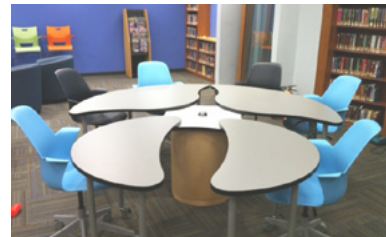


PALLETTES



ADA



PALMIERI

LEADING FURNITURE CONCEPT & DESIGN

A RICH HERITAGE, A STRONG FUTURE

The centuries-old tradition of handcraftsmanship continues today at Palmieri Furniture; with the use of premium materials, 21st century technology and quality workmanship combined; to create our exceptional collection of furnishings. We have what you are looking for and can guarantee that our furniture solutions are suitable for all types of applications. Step into our world of exceptional furniture and let us help you create those picture-perfect spaces!

WHO IS PALMIERI, YOU ASK?

Nestled in Italy's Umbrian hills is Monteleone, a small village with a rich history dating back to the Medieval Period. It is here that Rocco Palmieri was born, and where he assumed the furniture-making trade at a very young age. Perhaps inspired by the magnificent architecture of his hometown, and certainly by the handcraftsmanship taught to him by his mentors, Rocco immigrated to Canada in the mid-1950s to establish himself as a premier craftsman.

For more than 50 years, Palmieri Furniture has been designing and manufacturing innovative furniture of superior quality for libraries, schools, corporations and other public spaces. We specialize in working with wood but we design and manufacture furniture in many combinations of wood, metal, laminates and other materials.

Two generations of Palmieris (from left to right): Rocky, Rocco Sr., Vito and Frank



PALMIERI CERTIFICATIONS & STATEMENTS OF ASSURANCE

TABLE OF CONTENTS

<u>Introduction</u>	<u>3</u>
<u>Forest Stewardship Council (FSC)</u>	<u>4</u>
<u>Architectural Woodwork Institute (AWI)</u>	<u>6</u>
<u>U.S Green Building Council (USGBC)</u>	<u>7</u>
<u>Leadership in Energy & Environmental Design (LEED)</u>	<u>7</u>
<u>Americans with Disabilities Act (ADA)</u>	<u>8</u>
<u>General Services Administration (GSA)</u>	<u>10</u>
<u>Resources</u>	<u>11</u>
<u>References</u>	<u>11</u>

PLANNING A NEW PROJECT?

Our unique, modern and highly functional tables, service desks, collaborative workstations, displays, carrels, seating, book trucks, mobile storage and children's furniture can be found in the finest institutions across North America. We pride ourselves on our dedication to use the latest technology to bring our valued customers the highest quality products, on-time delivery, excellent customer service and complete customer satisfaction. In addition, Palmieri Furniture's Limited Lifetime Warranty (25 years) warrants that its products and collections are free from defects in materials and workmanship for the life of the product.

We've inspired creativity, learning and collaboration; through a variety of both classic and modern furniture products, suitable for any space, size or budget. We'll help you create your ideal work & play environment! So, we look forward to working with you in creating your absolute furniture experience! Please visit our website: www.palmierifurniture.com to learn more about us.

Palmieri Furniture has a nationwide dealer network, with partners located across Canada and the United States that can assist you with product selection, purchase and installation. If you would like to locate a Palmieri authorized dealer or representative in your area, please contact our customer service team at 1-800-413-4440 or e-mail: info@palmierifurniture.com.



ABOUT FOREST STEWARDSHIP COUNCIL*(FSC)*

The Forest Stewardship Council*(FSC)* is a not-for-profit organization founded in 1993 and an international certification dedicated to setting standards & promoting responsible management of the world's forests. This means that forests are evaluated to meet FSC's strict environmental and social standards. Fibre from certified forests is then tracked all the way to the consumer through the FSC Chain of Custody system. FSC-certified wood, paper and other forest products are then sold with the FSC label by certified companies in the marketplace.

FSC is the only forest certification system to be exclusively preferred by government agencies, corporations, and others around the world. Leading organizations are not only purchasing FSC-certified products, but they are also putting in place formal procurement policies requiring that suppliers provide FSC-certified products. FSC harnesses market demand to ensure responsible forest management.

FSC is the gold standard in forest certification, it is the only system supported by groups such as WWF, Sierra Club, Greenpeace, Natural Resources Defense Council and National Wildlife Federation, Canada Parks and Wilderness Society (CPAWS), and The Sierra Club of Canada. All of these organizations and many more, recognize FSC certification as the only legitimate, and the most rigorous, forest certification system in the world.

Today, more than 380 million acres of forest are certified under FSC's system, including more than 150 million acres in the US and Canada.

PALMIERI'S ENVIRONMENTAL COMMITMENT

We take pride on our dedication & commitment to use the latest materials and technology to meet the demands of the marketplace; evaluating and improving our process while being both socially and environmentally conscious.

At a time when making "greener" choices is a priority, we're proud to work with the Forest Stewardship Council (FSC) and be part of FSC-certified products—an environmentally-responsible alternative for designers, architects and engineers can rely on.

Specializing in working with wood, we are mindful of the impact that our products have on the environment. We select materials that do not negatively impact, reduce waste wherever we can and operate in a work environment that is both safe and secure.



CHAIN-OF-CUSTODY CERTIFICATION

Wood products such as furniture may only carry the FSC label if the manufacturer is Chain-of-Custody (COC) certified by FSC Accredited Certifier. Certification, is a voluntary certification system available to supply chain companies who want to demonstrate their commitment to responsible forest management by having their company's planning, practices and products independently evaluated against FSC's Chain-of-Custody standards.

Palmieri Furniture, is committed to FSC certification Standards and COC processes. By choosing COC certified materials, architects, businesses, consumers alike can make informed choices about the forest products they buy, to create environmentally responsible constructions or renovations for a positive change to keep our forests healthy for generations to come.

For more information on Palmieri Furniture and the library collections that are available FSC certified, please visit www.palmierifurniture.com. All FSC information is sourced from the Forest Stewardship Council. For more information on the Forest Stewardship Council, please visit www.fsc.org.

ADVANTAGES TO CHOOSING FSC-CERTIFIED PRODUCTS

Over the past 20 years, FSC has earned a reputation as the most rigorous, credible forest certification system. Thus, there are significant advantages to choosing FSC-certified products:

- **Credibility** - FSC is an independent, member-led group organized into social, environmental, and economic chambers that have equal authority. Members elect the board of directors and vote on major decisions. Anyone committed to responsible forest management can become a member of FSC. This open and balanced approach is unique to FSC and ensures a diversity of perspectives are represented in decision making.
- **Environmental Protection** - FSC's forest management standards expand protection of water quality, prohibit harvest of rare old-growth forest, prevent loss of natural forest cover and prohibit highly hazardous chemicals, which are all unique aspects of the system. For example, FSC prohibits the use of atrazine, which is otherwise legal in the US but banned in Europe because it has been shown to cause water pollution and birth defects. Other certifications allow atrazine use, including aerial spraying of the chemical.
- **Community Engagement** - FSC requires forest managers - on both public and private lands - to engage local community members and to protect customary rights of indigenous people, ensuring their voices are part of the certification process and impacts of forest operations are addressed. In addition, FSC requires the results of certification audits to be released to the public, even on private lands, which makes FSC unique among forest certifications.
- **Access to Markets** - Many major companies have policies that state a preference for FSC-certified products. Green building standards, including the US Green Building Council's LEED program, provide incentives for using FSC-certified materials. Increasingly, consumers are requesting FSC-certified products in retail stores across the country. Many governments require the use of FSC-certified products. Companies that produce FSC-certified products gain access to these markets, and many others.

FSC FACTS

FSC Certification Statistics as of September 2016:

- 35,133,373 acres certified in the US
- 166,417,570 acres certified in the US and Canada
- 4,201 companies Chain-of-Custody certified in the US
- 5,103 companies Chain-of-Custody certified in the US and Canada

General Forest Facts:

- Forests cover 30% of global land area
- 70% of terrestrial animals and plants live in forests
- Currently the world's forests store 283 billion tons of carbon in their biomass

FSC MARKET INFO

Growth in FSC-certified Forests in Canada:

- Over 50 million ha certified to FSC FM Standards in Canada.
- The number of FSC certified forests has grown by 191% in the past five years.
- 34% of Canada's certified forests are FSC-certified.
- 31% of the world's FSC-certified forests are in Canada.

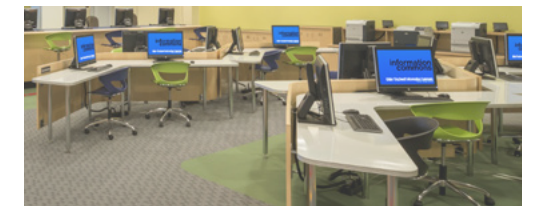
Growth of Global FSC-certified Forests:

- Over 180 million ha forest, in 80 countries, is certified to FSC Standards.
- FSC is the fastest growing forest certification system in the world according to the United Nations and FAO Forest Products Annual Market Review (2009-2010)

Growth in FSC-certified Chain of Custody Certificates:

- Over 850 Chain of Custody certificates in Canada.
- Over 28,000 Chain of Custody certificates worldwide.

For more information on Palmieri Furniture and the library collections that are available FSC certified, please visit www.palmierifurniture.com. All FSC & FSC Market information is sourced from the Forest Stewardship Council. For more information on the Forest Stewardship Council, please visit www.fsc.org.





ABOUT AWI'S QUALITY CERTIFICATION PROGRAM

The AWI's Quality Certification Program (QCP) is an industry-recognized quality assurance system that design professionals and building owners rely on to validate the skills and abilities of architectural woodworkers. Through a comprehensive testing and inspection, woodworking firms are evaluated in their ability to manufacture and install a wide variety of millwork per quality grade criteria set forth by the Architectural Woodwork Standards (AWS). The QCP performs a rigorous vetting and licensing process that requires woodworkers to:

- Provide ten trade references
- Complete test on Architectural Woodwork Standards
- Complete shop drawing review
- Have a plant inspection
- Provide samples of work for qualified AWS sections
- Have first 2 QCP projects inspected

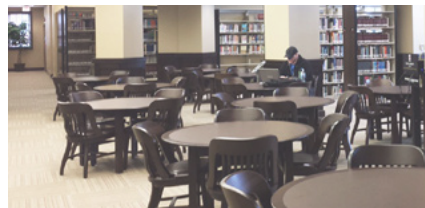
Once all AWI's QCP requirements are fulfilled, the woodworker receives a certificate of achievement to present as proof of their license.

The AWI first published the Architectural Woodwork Quality Standards Illustrated (OSI) in 1961. Over the years it has evolved into the 8th edition and served as "the authoritative resource for specifying interior architectural woodwork". In 2009, Architectural Woodwork Institute (AWI), the Architectural Woodwork Association of Canada (AWMAC) and the Woodwork Institute (WI) united and published Architectural Woodwork Standards (AWS)— a new standard that replaced and superseded both the OSI and WI's Manual of Millwork (MM). AWS shows technical and design illustrations and addresses all facets of architectural woodwork, from raw lumber and veneer through factory finishing and installation. In 2014, AWS has published it's 2nd edition. AWI Quality Certification Program (2017) Retrieved from <http://awiqcp.org/About>

PALMIERI FURNITURE QUALITY STANDARDS ARE CERTIFIED AT THE PREMIUM GRADE

Palmieri is a certified participant in AWI's Quality Certification Program, equipped to supply furnishings that meet any of AWS' three grades of quality: Premium, Custom and Economy—depending on the project specifications. For decades, Palmieri have been using premium materials and technology that meet and exceed the client's needs and expectations.

- Premium Grade: The grade specified when the highest degree of control over quality in the execution of the design intent and providing the highest level of quality in materials, workmanship and installation.
- Custom Grade: The grade specified for most high quality architectural woodwork. This grade provides a well-defined degree of control over the quality of materials, workmanship and installation of a project.
- Economy Grade: The grade defining the minimum expectations of quality, workmanship, materials and installation.



PALMIERI FURNITURE LIMITED CERTIFIED AS A QCP FIRM

Palmieri Furniture is a licensed QCP firm equipped to supply furnishings that meet the Architectural Woodwork Standards. The specific licenses held at Palmieri Furniture are:

- P5: Factory Finishing
- P10.1: Casework: Wood Veneered
- P11.1: Plastic Laminate (HPDL) Countertops
- P11.2: Wood Countertops
- P11.3: Solid Surface Countertops
- P11.4: Solid Phenolic Countertops
- P11.5: Epoxy Resin Countertops



For more information on Palmieri Furniture and AWI QCP certification, please visit www.palmierifurniture.com. For more information on the AWI's Quality Certification program, please visit www.awiqcp.org.



BUILDING THE ENVIRONMENTAL STANDARD WITH USGBC & LEED

The vision and mission of the U.S. Green Building Council (USGBC) is to improve the quality of life by transforming the design, composition and operation of the places where we live, learn, work and play. USGBC created a green building movement that ensures a healthy and dynamic balance between environmental, social and economic prosperity for the whole community, through their triple bottom line solutions: People, Planet & Profit. USGBC operates through LEED: Leadership in Energy & Environmental Design—a most widely used green building certification program for buildings and communities. This rating system is based on prerequisites and credits that a project meets to achieve a certification level: Certified, Silver, Gold and Platinum. USGBC Strategic Plan (2012) Retrieved from <http://www.usgbc.org/about>

WHY LEED?

LEED certification means healthier, more productive places, reduced stress on the environment by encouraging energy and resource-efficient buildings, and savings from increased building value, higher lease rates and decreased utility costs. LEED certified buildings will directly contribute 29.8 billion to U.S. GDP by 2018. LEED projects are responsible for diverting over 80 million tons of waste from landfills. Compared to the average commercial building, LEED Gold buildings in the General Services Administration's (GSA) portfolio consume a quarter less energy and generate 34% lower greenhouse gas emissions.

LEED is developed in a transparent, consensus-based process that includes several rounds of public comments and approval from USGBC members. In turn, LEED ensures that leaders can demand more from our buildings, creating healthy experiences, conserving precious resources and benefitting the business bottom line. Better Buildings Are Our Legacy (2017) Retrieved from <http://www.usgbc.org/leed>

HOW LEED WORKS?

LEED projects earn points across 9 basic areas that address key aspects of green buildings:

1. Integrative Process
2. Location and transportation
3. Sustainable sites
4. Water efficiency
5. Energy and atmosphere
6. Materials and resources
7. Indoor environmental quality
8. Innovation
9. Regional priority

LEED covers the following building phases, from new construction to existing buildings, from all industry sectors:

1. BD+C: Building Design + Construction
2. ID+C: Interior Design + Construction
3. O+M: Building Operations + Maintenance
4. HOMES: Single + Multifamily Homes
5. ND: Neighborhood Development

Based on the number of points achieved, a project earns one of the 4 LEED rating levels: Certified, Silver, Gold and Platinum. LEED works for all buildings—from homes to corporate headquarters—at all phases of development. LEED certified buildings are resource-efficient. They use less water, energy and reduce greenhouse gas emissions.



PALMIERI FURNITURE: USGBC MEMBERSHIP, COC CERTIFIED AND LEED APPROVED

Being a part of the USGBC community, Palmieri can connect with green building peers within the local and surrounding communities. Furthermore, Palmieri's USGBC's Silver membership status promotes and recognizes us as one of the industry leaders, who continually supports the development of USGBC's mission for a prosperous and sustainable future. As such, supporting USGBC's advocacy activities, the USGBC local community network, the Center for Green Schools, Project Haiti and other green building activities. Palmieri earned COC and FSC certification back in 2002.

For more information on Palmieri Furniture and USGBC membership, please visit www.palmierifurniture.com. For more information on the USGBC and LEED Certification program, please visit www.usgbc.org and www.usgbc.org/leed.

ADA

ACCOMMODATION AND ACCESSIBILITY FOR EVERYONE IS A PRIORITY.

ABOUT THE AMERICANS WITH DISABILITIES ACT (ADA)

The ADA is one of America's most comprehensive pieces of civil rights legislation that prohibits discrimination and guarantees that people with disabilities have the same opportunities as everyone else to participate in the mainstream of American life – to enjoy employment opportunities, to purchase goods and services, and to participate in state and local government programs and services. It gives federal civil rights protections to individuals with disabilities similar to those provided to individuals on the basis of race, color, sex, national origin, age, and religion. It guarantees equal opportunity for individuals with disabilities in public accommodations, employment, transportation, state and local government services, and telecommunications.

Many business facilities were built with features that do not accommodate people with disabilities, including people who use wheelchairs. This lack of accessibility makes it impossible for many people with disabilities to take part in everyday activities such as going to work, eating in a restaurant, or shopping in a store. The ADA recognizes that, for people with disabilities to participate in the everyday activities in their communities, they need to have access to employment as well as to the goods and services provided by businesses. Introduction to the ADA(2017) Retrieved from https://www.ada.gov/ada_intro.htm

PALMIERI FURNITURE: THE CHOICE FOR ADA-COMPLIANT FURNISHINGS

Palmieri Furniture believes that there should be no barriers – figurative or literal – to education and enrichment. We've inspired creativity, learning and collaboration; through a variety of both classic and modern furniture products, suitable for any space, size or application. Whether our furnishings solutions include variable work surface heights, modified apron rails or custom-designed product configurations, the result is always an environment that is refined, cohesive, and most importantly inviting to all. That is why every piece throughout our extensive collection of unique, modern and highly functional; tables, service desks, collaborative workstations, displays, carrels, seating, book trucks, mobile storage and children's furniture are designed to accommodate the standards set forth by the Americans with Disabilities Act (ADA).



For more information on Palmieri Furniture and our unique and modern collections that meet ADA Standards for Accessible Design, please visit www.palmierifurniture.com. For more information on the Americans with Disabilities Act (ADA), please visit www.ada.gov & <https://www.access-board.gov/guidelines-and-standards/buildings-and-sites/about-the-ada-standards/background/adaag>.

ADA STANDARDS FOR ACCESSIBLE DESIGN (guidelines as amended through September 2002)

- 4.2 Space Allowance and Reach Ranges.
 - 4.2.1 Wheelchair Passage Width. The minimum clear width for single wheelchair passage shall be 32 in (815 mm) at a point and 36 in (915 mm) continuously.
 - 4.2.2 Width for Wheelchair Passing. The minimum width for two wheelchairs to pass is 60 in (1525 mm)
 - 4.2.3 Wheelchair Turning Space. The space required for a wheelchair to make a 180-degree turn is a clear space of 60 in (1525 mm) diameter.
 - 4.2.4 Clear Floor or Ground Space for Wheelchairs.
 - 4.2.4.1 Size and Approach. The minimum clear floor or ground space required to accommodate a single, stationary wheelchair and occupant is 30 in by 48 in (760 mm by 1220 mm) (see Fig. 4(a)). The minimum clear floor or ground space for wheelchairs may be positioned for forward or parallel approach to an object. Clear floor or ground space for wheelchairs may be part of the knee space required under some objects.
 - 4.2.4.2 Relationship of Maneuvering Clearance to Wheelchair Spaces. One full unobstructed side of the clear floor or ground space for a wheelchair shall adjoin or overlap an accessible route or adjoin another wheelchair clear floor space. If a clear floor space is located in an alcove or otherwise confined on all or part of three sides, additional maneuvering clearances shall be provided.
 - 4.2.4.3 Surfaces for Wheelchair Spaces. Clear floor or ground spaces for wheelchairs shall comply with 4.5.
 - 4.2.5 Forward Reach. If the clear floor space only allows forward approach to an object, the maximum high forward reach allowed shall be 48 in (1220 mm). The minimum low forward reach is 15 in (380 mm).
 - 4.2.6 Side Reach. If the clear floor space allows parallel approach by a person in a wheelchair, the maximum high side reach allowed shall be 54 in (1370 mm) and the low side reach shall be no less than 9 in (230 mm) above the floor.
- 4.3.1.1.2 Size. Each area of rescue assistance shall provide at least two accessible areas each being not less than 30 inches by 48 inches (760 mm by 1220 mm). The area of rescue assistance shall not encroach on any required exit width. The total number of such 30-inch by 48-inch (760 mm by 1220 mm) areas per story shall be not less than one for every 200 persons of calculated occupant load served by the area of rescue assistance.
- 4.32 Fixed or Built-in Seating and Tables.
 - 4.32.1 Minimum Number. Fixed or built-in seating or tables required to be accessible by 4.1 shall comply with 4.32.2 through 4.32.4.
 - EXCEPTION: Fixed or built-in seating or tables used primarily by children ages 12 and younger shall be permitted to comply with 4.32.5.
 - 4.32.2 Seating. If seating spaces for people in wheelchairs are provided at fixed tables or counters, clear floor space complying with 4.2.4 shall be provided. Such clear floor space shall not overlap knee space by more than 19 in (485 mm).
 - 4.32.3 Knee Clearances. If seating for people in wheelchairs is provided at tables or counters, knee spaces at least 27 in (685 mm) high, 30 in (760 mm) wide, and 19 in (485 mm) deep shall be provided.
 - 4.32.4 Height of Tables or Counters. The tops of accessible tables and counters shall be from 28 in to 34 in (710 mm to 865 mm) above the finish floor or ground.
 - 4.32.5 Children's Fixed or Built-in Seating and Tables. Fixed or built-in seating or tables used primarily by children ages 12 and younger shall comply with 4.32.5 as permitted by 4.32.1.
 - EXCEPTION: Fixed or built-in seating or tables used primarily by children ages 5 and younger shall not be required to comply with 4.32.5 if clear floor space complying with 4.2.4 parallel to fixed tables or counters is provided.
- 8.1 General. In addition to the requirements of section 4, the design of all public areas of a library shall comply with 8, including reading and study areas, stacks, reference rooms, reserve areas, and special facilities or collections.
- 8.2 Reading and Study Areas. At least 5 percent or a minimum of one of each element of fixed seating, tables, or study carrels shall comply with 4.2 and 4.32. Clearances between fixed accessible tables and between study carrels shall comply with 4.3.
- 8.3 Check-Out Areas. At least one lane at each check-out area shall comply with 7.2(1). Any traffic control or book security gates or turnstiles shall comply with 4.13.
- 8.4 Card Catalogs and Magazine Displays. Minimum clear aisle space at card catalogs and magazine displays shall comply with Fig. 55. Maximum reach height shall comply with 4.2, with a height of 48 in (1220 mm) preferred irrespective of approach allowed.
- 8.5 Stacks. Minimum clear aisle width between stacks shall comply with 4.3, with a minimum clear aisle width of 42 in (1065 mm) preferred where possible. Shelf height in stack areas is unrestricted.

For more information on Palmieri Furniture and our unique and modern collections that meet ADA Standards for Accessible Design, please visit www.palmierifurniture.com. For more information on the Americans with Disabilities Act (ADA), please visit www.ada.gov & <https://www.access-board.gov/guidelines-and-standards/buildings-and-sites/about-the-ada-standards/background/adaag>.

RESOURCES

HOW TO BUY

Palmieri Furniture has a nationwide dealer network, with partners located across Canada and the United States that can assist you with product selection, purchase and installation. If you would like to locate a Palmieri authorized dealer or representative in your area, please contact our customer service team at 1-800-413-4440 or e-mail: info@palmierifurniture.com.

Limited Lifetime (25 years) warranty for all products except for Seating—which is 2 years.
See full details of our warranty, terms and conditions on our website: www.palmierifurniture.com or simply contact us.



REFERENCES:

FSC (FOREST STEWARDSHIP COUNCIL)

For more information on the FSC, please visit www.fsc.org.

AWI (ARCHITECTURAL WOODWORK INSTITUTE)

For more information on AWI's Quality Certification program, please visit www.awiqcp.org.

USGBC/LEED (U.S. Green Building Council/Leadership in Energy and Environmental Design)

For more information on the USGBC and LEED Certification program, please visit www.usgbc.org and www.usgbc.org/leed.

ADA (Americans with Disabilities Act)

For more information on the ADA, please visit www.ada.gov & <https://www.access-board.gov/guidelines-and-standards/buildings-and-sites/about-the-ada-standards/background/adaag>.



PALMIERI

create. communicate. collaborate.

Palmieri Furniture Ltd.

1230 Reid Street
Richmond Hill
Ontario Canada L4B 1C4

T: 905 731 9300
F: 905 731 9878
TF: 800 413 4440

E: info@palmierifurniture.com
W: www.palmierifurniture.com