

# PALLEWERI



**KREATIONS**  
TABLE







## Step 1



Round



Square



Rectangle



Trapezoid



Leaf



Triangle



Trio-Squared



Trio-Round



Trio-Link



Quad-Link

## Step 2



Acrylic



Aluminum\*



Square\*



Dropped Square\*



Dropped Chamfered\*



Dropped Bullnose\*

\*Edge not suitable for all Table Top Shapes.

## Step 3

### Metal Leg Option



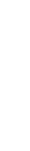
Square 2"



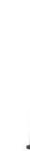
Square Stem 2"



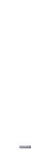
Diameter 2"



Diameter Stem 2"



Balloon 2 1/2"



Trumpet Base\*



Flat Pedestal Base\*



Flip OR Fold Leg\*

\*Option not suitable for all Table Top Shapes, and/or Sizes.

### Wood Leg Option



Square 2 3/8"



Square Radius 2 3/8"



Square Tapered 2 3/8"



Diameter Tapered 2 3/8"



Safari 2 3/8"

### Caster Options:



Available on Metal Legs ONLY, with the exception of the Balloon Leg and Metal Bases.

**KREATIONS** table program allows you to create a table to suit your style and needs.

Simply choose a **Table Top**, then an **Edge Style**, followed by a **Leg Option**, and there you have it!

... Your very own custom table!

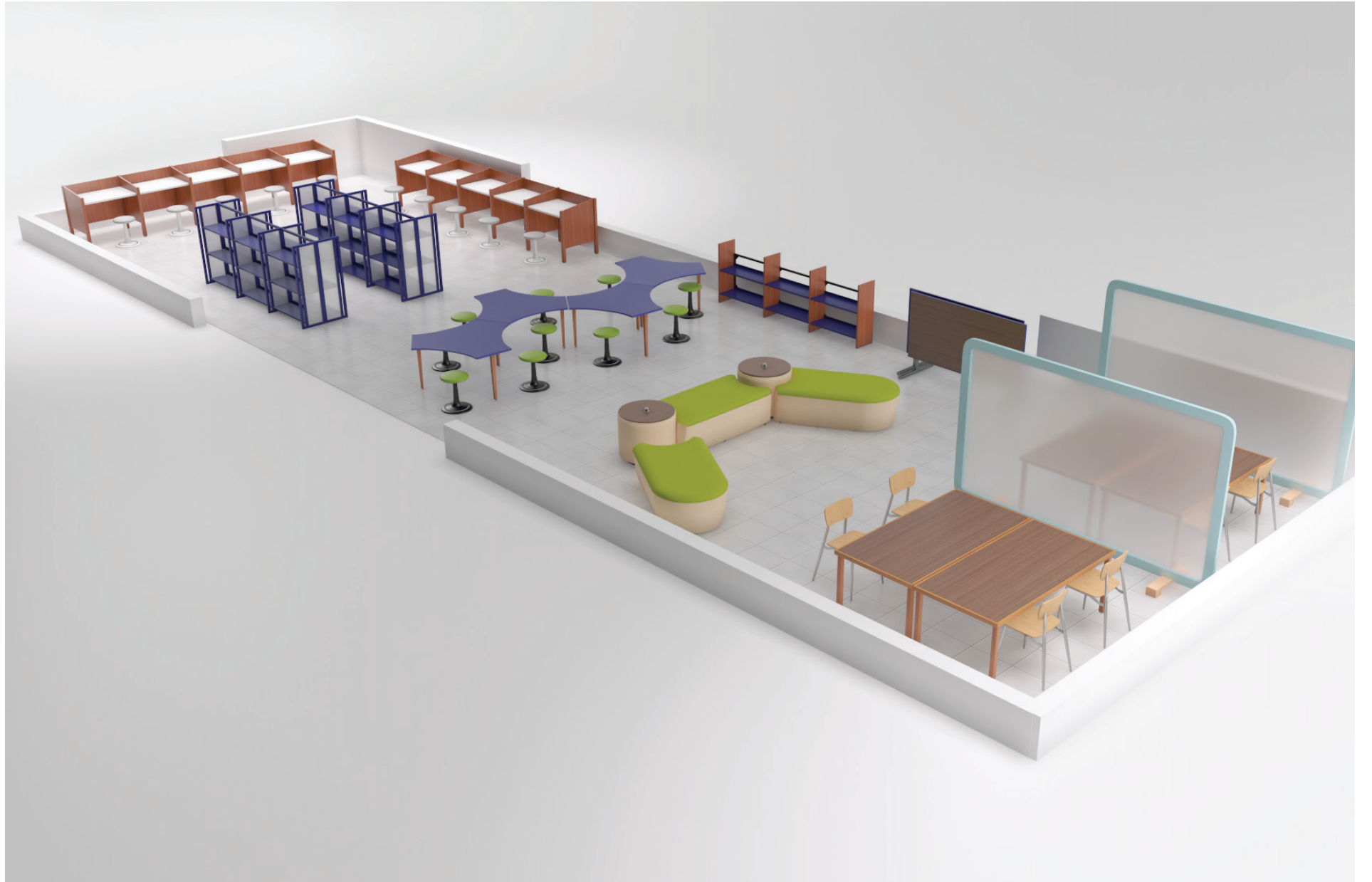
Over 2300 combinations of styles and sizes to create!



**KREATIONS** can fit into any environment, such as Elementary, Youth, and Recreational, and support a variety of functions.







**KREATIONS** is a mix and match program and can provide a variety of uses with our table tops and base styles.



more than a table



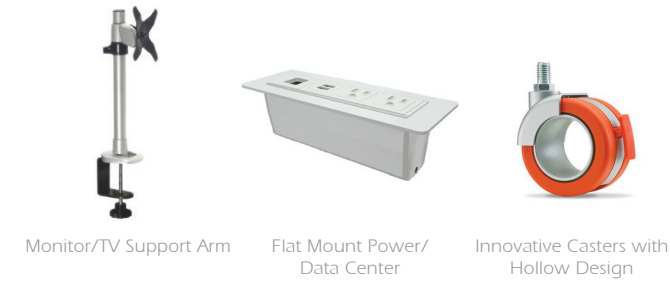
# KREATIONS Media Table



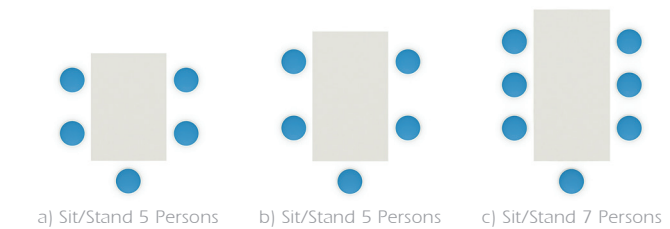
## Leg Base Media Table (LMT)

Palmieri Kreation® leg base media tables show how modern technology needs are met by traditional tables common in today's educational environments. Whether you are in a small group setting or mini corporate meeting, Palmieri Kreation® are suitable to meet your daily tasks.

Accessories (But not limited to)



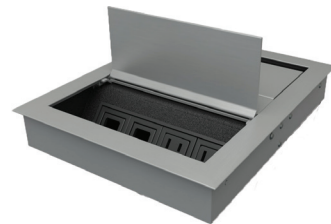
Configurations



## T-Leg Base Media Table (TMT)

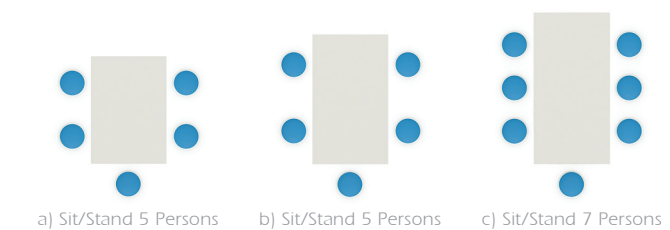
Palmieri Kreation® T-Leg base media tables are power-ready and provide a spacious leg room and easy access for variety of seating options. This table offers a streamlined design to allow greater mobility around the table for numerous users.

Accessories (But not limited to)



A double-faced recessed power station unit with a clear silver anodized aluminum finish with a black faceplate. It is scalable and customizable to accommodate your specific needs.

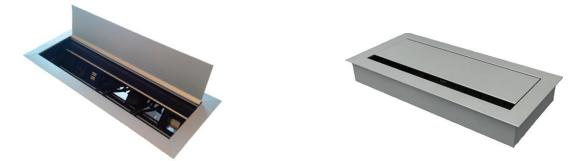
Configurations



## Flat Pedestal Base Media Table (FPMT)

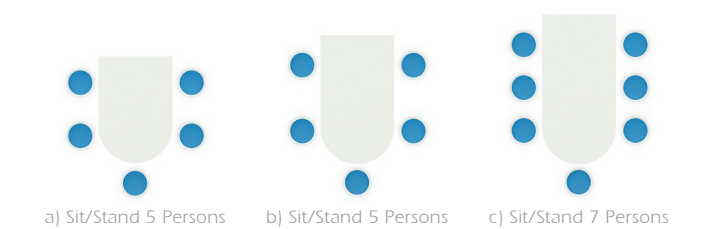
Palmieri Kreation® flat pedestal base media tables are excellent units that provide a contemporary, yet useful, feel to your space. Gather with your students or colleagues for a formal and/or informal lecture or session.

Accessories (But not limited to)



Recessed power station units have a clear silver anodized aluminum finish and black faceplate.

Configurations



## Leg Base Media Table

with Glides:

- a) TB-6042-AC-M-SO  
60" x 42" x 29"H or 32"H
- b) TB-7242-AC-M-SO  
72" x 42" x 29"H or 32"H
- c) TB-8442-AC-M-SO  
84" x 42" x 29"H or 32"H

with Casters:

- a) TB-6042-AC-MC-SO  
60" x 42" x 29"H or 32"H
- b) TB-7242-AC-MC-SO  
72" x 42" x 29"H or 32"H
- c) TB-8442-AC-MC-SO  
84" x 42" x 29"H or 32"H



## Flat Pedestal Base Media Table

with Glides:

- a) TB-6042-AC-FP2  
60" x 42" x 29"H or 32"H
- b) TB-7242-AC-FP2  
72" x 42" x 29"H or 32"H
- c) TB-8442-AC-FP2  
84" x 42" x 29"H or 32"H

\* All of these tables are available in the following heights:  
~ 29"H: sitting  
~ 32"H: wheelchair accessible  
~ 39"H: standing (for flat pedestal base media tables only)

\*These tables are equipped with wire management, support stretchers, direct power for individual use and/or media share - ideal for collaboration.



## T-Leg Base Media Table

with Glides:

- a) EO-6042-AC-T  
60" x 42" x 29"H or 32"H
- b) EO-7242-AC-T  
72" x 42" x 29"H or 32"H
- c) EO-8442-AC-T  
84" x 42" x 29"H or 32"H







# CUSTOMIZE YOUR KREATIONS

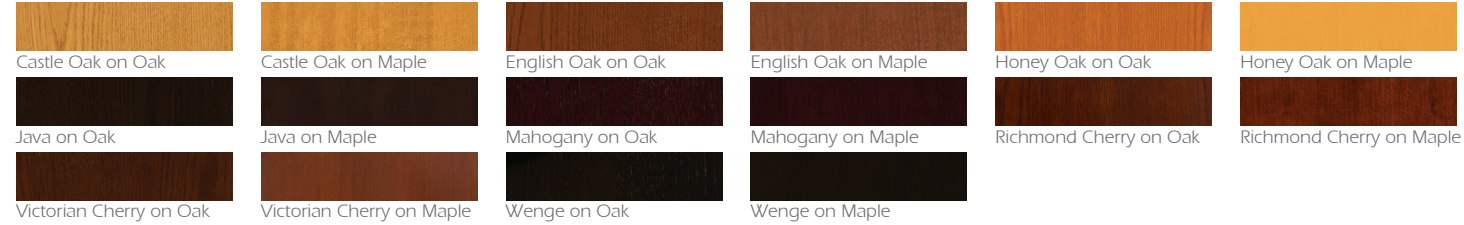
## Wood Finishes

### Natural Finishes



*\*Cherry & Walnut may be subject to an upcharge*

### Stain Finishes



## Laminates

### Wilsonart



### Abet Laminati



## Acrylic Edge Bands



## Metal Paint





## RESOURCES

### HOW TO BUY FROM PALMIERI

Palmieri has a nationwide dealer network with partners located across the United States and Canada that can assist you with product selection, purchase and installation.

### WARRANTY

Limited Lifetime (25 years) warranty for all products except Seating - which is 2 years.

### ENVIRONMENTAL STANDARDS & CERTIFICATIONS

Palmieri is conscious of the impact that our products have on the environment. Our objective is to offer products that support responsible forest management and conservation. We are committed and proud to be among the select few that can offer environmentally-responsible alternatives to designers, architects and engineers with LEED certification.

If you would like to locate a Palmieri authorized dealer or representative in your area or find more information, please contact us at **1-800-413-4440** or e-mail [info@palmierifurniture.com](mailto:info@palmierifurniture.com).



**ADA**



### DISCLAIMER

All product images, installations and specifications are based on the latest product information available at the time of publications. Images shown are for illustration purposes only and may not be an exact representation of the product and do not guarantee any product features. PALMIERI reserves the right to withdraw or otherwise modify any images or published materials we provide, at our sole discretion without prior notice. This may include revisions and substitutions to colors, materials, specifications, features, prices, and models offered.



# PALMIERI

create. communicate. collaborate.

---

Palmieri Furniture Ltd.

1230 Reid Street  
Richmond Hill  
Ontario Canada L4B 1C4

T: 905 731 9300  
F: 905 731 9878  
TF: 800 413 4440

E: [info@palmierifurniture.com](mailto:info@palmierifurniture.com)  
W: [www.palmierifurniture.com](http://www.palmierifurniture.com)